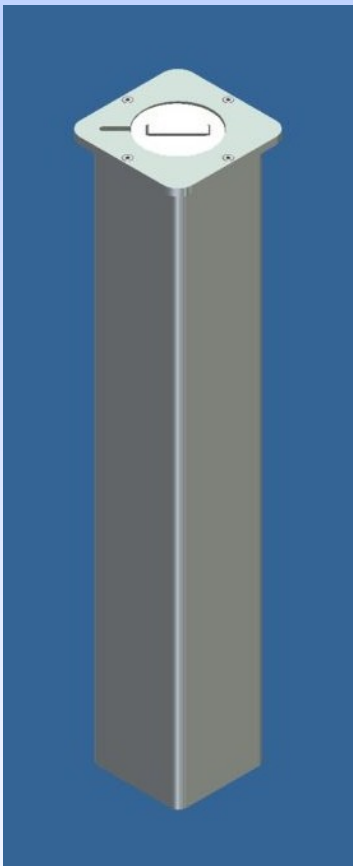


Manual Retractable Bollard

(Pad-lockable Type)

Manual Retractable Bollards are intended for applications where the bollard must be removed to allow access to authorised vehicles, but where storage options for the removed post are limited. The bollard retracts within an in-ground canister, and mounts flush with the road surface when in the retracted state.



Retracted Position

Product Features:

- Easy to use and easy to service.
- Convenient pad-lockable operation (Padlock not included).
- Padlock above ground level for added convenience.
- Self contained, retractable handle.
- All components are Zinc Plated for superior corrosion protection.
- Optional powdercoat to customer selection.



Extended Position

Specifications

Product Description	Manual Retractable Bollard (Pad-lockable type)
Corrosion protection	Hot Dip Galvanising to all in-ground components, Electrolytic Zinc to all above ground components
Decorative Finish	OPTIONAL powdercoat to customer order
Material	114mm diameter post – 5mm thick
Height	770mm above ground, 920 mm in-ground
Fixings	Concrete in-situ
Weight	37 Kg (fully assembled)

CONTACT:

Phone: (08) 9246 9923
Fax: (08) 9246 9963
Email: ask-us@accesstechnologies.com.au
Web: www.cablegate.com.au

